

Note: the following pages are from brochures only pertaining to the appropriate vehicle. This is not a complete brochure.

SUCCESS STORY NO. 5:

ROOMINESS STAYS IN STYLE WITH PONTIAC'S NEW MID-SIZE CARS.

In this era of trimmer-wheelbase cars, Pontiac is more determined than ever to bring you the roominess you and your family deserve.

Obviously, that determination is paying off with cars like the 1980 mid-size Pontiac LeMans, Grand LeMans and Grand Am.

You won't believe the space efficiency of these cars until you sit inside. Full-width seating for six honest-to-goodness adults. With even more head room, leg and luggage room than LeMans' longer-wheelbased '77 counterpart.

Pontiac has achieved this by increasing the proportion of passenger volume to the car's overall volume. Lowering the floor. Slimming the seats but not the comfort. And doing it all, Pontiac style.

GRAND LEMANS

If it's spacious mid-size luxury you're after, this 1980 Grand LeMans is just your style.

This year, sink back into well-cushioned notchback cloth or vinyl seats. Or opt for an available 60/40 loose-pillow design notchback seat.

Experience a luxurious sense of quiet from the added acoustical insulation. Or fill those expansive spaces with a newly available Delco Electronically Tuned Radio with extended range dual rear speakers.



While you're inside enjoying all this, the outside world gets to admire those rich new Grand LeMans contours, with intriguing new grille design and wraparound tail lamps.

LEMANS

Is there still room in this world for a great mid-size car value with plenty of style?

You bet your Pontiac LeMans there is!

walnut vinyl applique. Impressive full-width seats and upholstered door panels.

Naturally, both LeMans and Grand LeMans are big on that smooth Pontiac ride, with radial tuned suspension. For further details, see the Facts & Figures section of this catalog.

GRAND AM

Grand Am is one exhilarating piece of road machinery that just happens to hold families comfortably.

It certainly holds its own on the road. You get the Rally Handling Package, with heavy duty front and rear stabilizers. Pliacell shocks. Wide steel-belted radial tires and specifically tuned suspension components. Plus power steering and brakes—all standard. All for a ride that's smooth yet nicely tuned to the road.

This mid-size Grand Am more than holds its own in the looks department. With sporty new ported-grille design. Two-tone paint. Accent stripes. Bucket seats with console. Custom sport steering wheel. Rally gages with clock. And instrument panel padding that looks custom-stitched.

Roominess is still in style, and Pontiac's got it with three great mid-size cars. Now why don't you get one for yourself!

This one's loaded with good looks. Classy. Clean. Contemporary. From the first gleam of its single rectangular headlamps to the last glint of its ornamental rear deck-lock cover.

And thanks to resilient body-color bumpers and Pontiac's generous corrosion resisting treatments, this LeMans is designed to look good for a long time.

LeMans has plenty of style inside too. An instrument panel with

SUCCESS STORY NO. 7:

FOUR SAFARIS DEMONSTRATE PONTIAC'S NEW APPROACH TO VERSATILITY.

Today's wagon buyers expect more, demand more, than ever before. More room. More efficient designs. And more all-around versatility.

That's why Pontiac is proud to present four extraordinary solutions for a new decade of demanding wagon buyers.

You wouldn't settle for less.

BONNEVILLE SAFARI

This is it. Full-size versatility in the most luxurious Safari Pontiac offers.

This is the first Pontiac Safari available with a new diesel V-8.

This is new luxury. Outside, there's an aerodynamic new look accented by handsome new planked siding. Inside, you'll discover the beautifully practical comforts of full-width vinyl seats, a fully carpeted load floor and added acoustical insulation.

This is today's versatility. Over 88 cu. ft.* of load space that's ready to go to work. A three-way tailgate with standard power window for easy access. And radial tuned suspension to tote cargo smoothly.

This is the luxurious new 1980



Bonneville Safari. And full-size versatility never looked this good.

CATALINA SAFARI

Pontiac's new Catalina Safari is one of the best full-size values of the year.

Look beyond this roomy wagon's streamlined new appearance and its available diesel V-8. You'll notice how functionality has been

built right in. Power brakes and steering. Durable cut-pile carpeting. Lockable stowage areas. All for a price that's nicely affordable.

Catalina Safari. A valuable new full-size solution from Pontiac.

GRAND LEMANS SAFARI

This new Grand LeMans Safari is how Pontiac gives a full measure of

luxury to mid-size efficiency.

First, computer-assisted designers helped deliver over 72 cu. ft.* of space or room for six adults.

Then Pontiac styling experts went to work, incorporating a Grand Prix-style instrument panel and fully carpeted load floor into a beautiful interior. And offering you a choice of simulated woodgrain siding or double two-tone paint treatment outside at no extra charge.

The end result? One very sensibly luxurious new mid-size Safari.

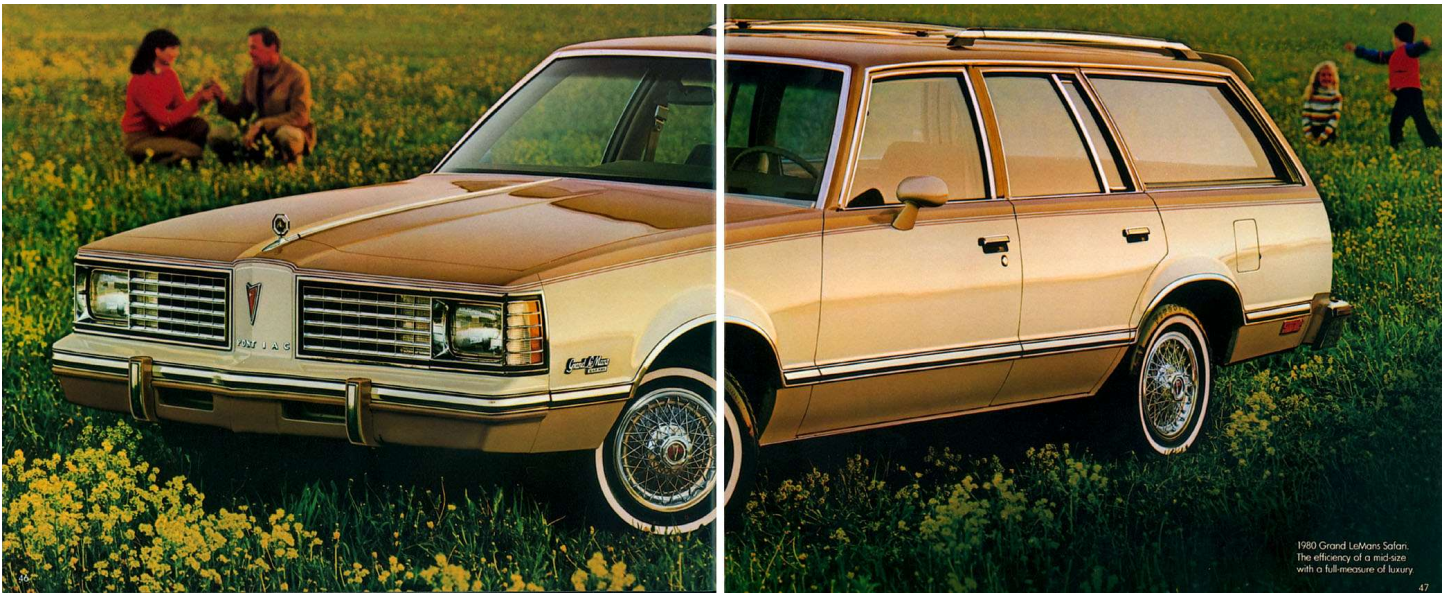
LEMANS SAFARI

LeMans Safari is Pontiac's straight-ahead new mid-size wagon.

Built to handle a variety of tough jobs with V-6 practicality, there's enough wide-open cargo space for a weekend's worth of work. Plus a trim two-way tailgate. Tough radial tires. And more than enough Pontiac style to quiet the competition.

Looking for a versatile mid-size value? Head straight for LeMans Safari.

*Load space with rear seat folded down.



1980 Grand LeMans Safari.
The efficiency of a mid-size
with a full measure of luxury.



Pontiac doesn't call Grand LeMans Safari grand for nothing. Shown with available 60/40 notchback cloth seating.

SAFARI WAGON FACTS & FIGURES

LE MANS SAFARI GRAND LE MANS SAFARI

STANDARD EQUIPMENT

EXTERIOR

- New Grille, Park and Signal Lamps
- Single Rectangular Headlamps
- Resilient Front End Panel and Body-colored Bumper
- Bright Bumper Strips
- Concealed Windshield Wipers
- Lift-type Tailgate Window
- Convenient Fold-down Tailgate
- Wheel Opening Moldings
- Roof Drip Moldings
- Hubcaps with Pontiac Crest

In Addition to or Replacing LeMans Safari Exterior Features, Grand LeMans Safari Includes:

- Simulated Woodgrain Siding w/Wide Body Peripheral Molding
- Two-tone Paint Can Replace Siding at No Extra Cost
- Hood Ornament and Molding
- Side Window Reveal Moldings
- Woodgrain Door Edge Guards (w/Woodgrain only)
- Brushed Aluminum Center Pillar
- Dual Horns

INTERIOR

- Deluxe Cushion Steering Wheel
- Column-mounted Dimmer Switch
- Simulated Wood Applique on Instrument Panel Trim Plate
- All-vinyl Interior with New Door Panels
- Full-width Vinyl Seats
- Nylon-blend, Cut-pile Carpeting
- Bin-type Glove Box with Coin Holder
- Sidewall Storage Compartments
- Textured Cargo Floor Vinyl Painted
- Inside Hood Release

In Addition to or Replacing LeMans Safari Interior Features, Grand LeMans Safari Includes:

- Luxury Cushion Steering Wheel
- Grand LeMans Interior Door Trim
- Carpeted Lower Door Panels
- Carpeted Load Floor
- Door Pull Straps
- Dome Lamp Switches on All Doors
- Added Acoustical Insulation

Standard Tires

- 195/75R14 Black Fiberglass Belt*
- Compact Spare

Available Tires

- 195/75R14 White Fiberglass Belt*
- 195/75R14 White Steel Belt*
- 205/70R14 Black Steel Belt†
- 205/70R14 White Steel Belt††
- 205/70R14 White Letter Steel Belt††
- 205/75R14 White Steel Belt*

*Radials with radial-tuned suspension †Includes Rally Handling Package with larger front stabilizer bar, rear stabilizer bar and specially-tuned suspension components.

CATALINA SAFARI BONNEVILLE SAFARI

STANDARD EQUIPMENT

EXTERIOR

- All-new Front and Side Styling

POWERTRAINS

Engine	[Order Code]	Certi- fication	Trans- mission	Gearshift Location*	Axle Ratios Std.	Avail.
LeMans/Grand LeMans Safari						
Base: 3.8 Liter (229 CID) 2-bbl V-6	[LC3] C	Fed.	Auto	Col/Floor	2.73	NA
Base: 3.8 Liter (231 CID) 2-bbl (C-4)†† V-6	[LD5] B	Cal.	Auto	Col/Floor	2.73	NA
Avail: 4.3 Liter (265 CID) 2-bbl V-8	[LS5] A	Fed.	Auto	Col/Floor	2.41	NA
Avail: 4.9 Liter (301 CID) 4-bbl V-8	[L37] A	Fed.	Auto	Col/Floor	2.29	7.56
Avail: 5.0 Liter (305 CID) 4-bbl V-8	[LG4] C	Cal.	Auto	Col/Floor	2.41	2.73
Catalina/Bonneville Safari						
Base: 4.9 Liter (301 CID) 4-bbl V-8	[L37] A	Fed.	Auto	Column	2.56	NA
Base: 5.7 Liter (350 CID) 4-bbl V-8	[L34] D	Cal.	Auto	Column	2.56	2.73
Avail: 5.7 Liter (350 CID) 4-bbl V-8	[L77] B	Fed.	Auto	Column	2.73	3.08
Avail: 5.7 Liter (350 CID) Diesel V-8	[LF9] D	Fed., Cal.†	Auto	Column	2.73	NA

Pontiacs are equipped with GM-built engines produced by the following Divisions: A—Pontiac B—Buick C—Chevrolet D—Oldsmobile.

*Floor shift with bucket seats only.

††Computer-controlled catalytic converter †The diesel engine is not available in Calif. at time of printing. See dealer for availability.

- Hood Ornament & Molding
- 3-way Tailgate
- Front & Rear Bumper Strips
- Power-operated Tailgate Window
- Wraparound Park & Signal Lamps
- Hubcaps with Pontiac Crest

In Addition to or Replacing Catalina Safari Exterior Features, Bonneville Safari Includes:

- Specific Hood Ornament & Molding
- Deluxe Wheel Covers
- Simulated Woodgrain Siding
- Two-tone Paint Can Replace Siding at No Extra Cost
- Chrome Mirrors, LH Rem., RH Convex

INTERIOR

- Deluxe Cushion Steering Wheel
- Column-mounted Dimmer Switch
- Simulated Walnut Applique on Instrument Panel Trim Plate
- Fully Upholstered Door Trim Panels
- Full-width Vinyl Seats
- Glove Box and Ash Tray Lamp
- Nylon-blend, Cut-pile Carpeting
- Lockable Floor & Side Compartments
- Inside Hood Latch Release

In Addition to or Replacing Catalina Safari Interior Features, Bonneville Safari Includes:

- Luxury Door Panels (Carpeted Lower)
- Carpeted Load Floor
- Pull Straps on all Doors
- Dome Lamp Switches on all Doors
- Added Acoustical Insulation

Standard Tires

- 225/75R-15 Black*
- Compact Spare

Available Tires

- 225/75R-15 White*
- Steel-belted radials with radial-tuned suspension

Standard Steering

- Manual Ball-rod Gear—LeMans, Grand LeMans
- Power—Catalina, Bonneville

Standard Brakes (All)

- Power Front Disc, Rear Drum

Fuel Tank Capacity

- 69 Liters (18.1 gals.)—(LeMans)
- 83 Liters (22 gals.)—(Catalina)

MAJOR OPTIONS

- Air Conditioning, Custom or Climate Control (A/C Req. w/305 or 350 CID V-8)
- Belts, Custom Color-keyed (Inc. w/Extra-cost Trims)
- Bumper Guards, Front
- Bumper Guards, Rear
- Carpet, Load Floor (Std. Bonneville, & Grand LeMans, Inc. w/Extra-cost Trims)
- Carpet, Load Floor & Sidewall (Bonneville, Catalina only)
- Clock, Digital Quartz (w/Air Cond. only, Req. Lamp Group on Grand LeMans, LeMans; NA w/ETR Radio)
- Clock, Electric Quartz (NA w/Diesel or ETR Radio; Std. Bonneville & Catalina in Calif.; NA w/Rally Gages & Tach. in Grand LeMans, LeMans)

- Cruise Control
- Defroster, Electric Rear Window
- Headlamps, Tungsten Quartz Halogen
- Insulation, Additional Acoustical (Std. Grand LeMans, Bonneville)
- Lamp Group
- Lamp, Dome Reading
- Lamp, Door Courtesy (Bonne. only)
- Lamps, Cornering (Bonne., Cal. only)
- Luggage Carrier
- Mirror, Illuminated Visor RH
- Mirrors, Sport, LH Rem., RH Convex
- Mirrors, Sport, LH Remote, RH Remote Convex
- Mirrors, Chrome, Power, RH Convex (Bonneville, Catalina only)
- Power Antenna, Automatic
- Power Antenna, AM/FM/CB Tri-band (Inc. w/CB radios)
- Power Door Locks
- Power Door Lock, Tailgate Only (Inc. w/Power Locks on Catalina, & Bonneville only)
- Power Seat, Driver
- Power 60/40 Seat, Driver & Passenger
- Power Windows (Front only on LeMans, Grand LeMans)
- Power Front Windows & Rear Vents (LeMans, Grand LeMans only)
- Radio, AM/FM Stereo
- Radio, AM & Stereo 8-track Tape Player
- Radio, AM/FM Stereo & Stereo 8-track Tape Player
- Radio, AM/FM ETR Stereo w/Seek & Scan (NA w/Electric Clock or Rally Gages)
- Radio, AM/FM Stereo w/40-Channel CB (Inc. Tri-band Antenna)
- Radio, AM/FM Stereo & Stereo Cassette Tape Player

DIMENSIONS

	Grand LeMans Safari Safari Mm. (in.)	Bonneville Safari & Catalina Safari Mm. (in.)
Overall length	5025 (197.8)	5505 (216.7)
Overall width	1843 (72.6)	2029 (79.9)
Wheelbase	2745 (108.1)	2945 (116.0)
Tread, front/rear	1486/1474 (58.5/58.0)	1578/1628 (62.1/64.1)
Head room, front/rear	985/985 (38.8/38.8)	1007/1003 (39.6/39.3)
Leg room, front/rear	1086/912 (42.8/35.9)	1078/958 (42.4/37.7)
Cargo volume (liters) (cu. ft.)	2049 (72.4)	2488 (87.9)
Length of cargo space at floor	2064 (81.3)	2290 (90.2)
Top of front seatback to closed tailgate	1852 (72.9)	2128 (83.8)
Minimum distance between wheel-houses at floor	1108 (43.6)	1224 (48.2)
Rear-end opening width at bell	1312 (51.7)	1224 (48.2)
Maximum cargo height	763 (30.0)	755 (29.7)

Published dimensions are for a base automobile without optional equipment or accessories. Additional accessories or equipment ordered at the customer's option can result in a minor change in these dimensions.

- Notchback 60/40 or Bucket Seats (LeMans & Grand LeMans Safaris Only) in Cloth or vinyl
 - Seat, Reclining Passenger (w/Bucket, 40/40 or Notchback Front Seats only)
 - Seat, Safari Third (All-vinyl; Inc. Bumper Stop on Bonneville, Catalina)
 - Shock Absorbers, Superlift or Automatic Level Control (Bonneville, Catalina only)
 - Steering Wheel, Tilt (NA w/Deluxe Cushion Steering Wheel)
 - Trailer Group, Light or Heavy (Bonneville, Catalina only)
 - Trailer Group, Medium
 - Windshield Wipers, Controlled Cycle
- WHEELS, WHEEL COVERS**
For LeMans/Grand LeMans Safaris, see LeMans Section p. 54. For Catalina/Bonneville Safaris, see Catalina/Bonneville Section p. 52. See salesperson for additional listings and restrictions.

**MORE
PONTIAC
EXCITEMENT
TO THE
GALLON**

LE MANS/GRAND AM FACTS & FIGURES

LE MANS COUPE SEDAN GRAND LE MANS COUPE SEDAN GRAND AM COUPE

STANDARD EQUIPMENT EXTERIOR

- New Grille and Park and Signal Lamps
- Pontiac Crest and Nameplate on Front End Panel
- Single Rectangular Headlamps
- "LeMans" Nameplate on Front Fender
- New Wide, Wraparound Tail Lamps
- Deck Lid Lock Cover with Crest
- Concealed Windshield Wipers
- Wheel Opening Moldings
- Resilient, Energy-absorbing Front & Rear Bumpers
- Body-color Bumpers with Bright Strips
- Hubcaps with Pontiac Crest

In Addition to or Replacing LeMans Exterior Features, Grand LeMans Includes:

- Grand LeMans Identification on Front Fenders
- Grand LeMans Hood Ornament
- Hood Windsplit Molding
- Peripheral-type Body Lower Side Molding
- Bright Tail Lamp Bezels
- Body-color Inserts in Outside Door Handles
- Side Window Reveal Moldings and Pillar Applique on Sedan
- Black Rocker Panel Moldings
- Dual Horns

In Addition to or Replacing LeMans Exterior Features, Grand Am Includes:

- Distinctive Front End Panel (No Hood Ornament)
- New Blacked-out Grilles
- Body-color Sport Mirrors
- Two-tone Lower Body and Bumper Paint Treatment and Accent Stripes
- Blacked-out Tail Lamps
- Grand Am Nameplates
- Rally Handling Package
- Rally IV Wheels

INTERIOR

- Full-Width Seats in Dover II Cloth
- New Design Fully Upholstered Door Panels
- Deluxe Cushion Steering Wheel
- Column-mounted Dimmer Switch
- Simulated Regal Walnut Applique on Instrument Panel Trim Plate
- Bin-type Glove Compartment with Coin Holder
- Tilt-type Inside Non-glare Mirror
- Nylon blend, Cut-pile Carpeting
- Front and Rear Ash Trays
- Luggage Compartment Mat
- Cigar Lighter

POWERTRAINS

Engine	[Order Code]	Certi- fication	Transmission	Gearshift Location	Axle Ratios Std. Avail.
LeMans/Grand LeMans					
Base 3.8 Liter (229 CID) 2-bbl V-6	[LC3]C	Fed.	Base Man. 3-Spd Automatic	Floor Col./Floor*	2.73 NA 2.41 NA
Base 3.8 Liter (231 CID) 2-bbl (C-4) V-6	†[LD5]B	Cal.	Automatic	Col./Floor*	2.41 3.08
Avail. 4.3 Liter (265 CID) 2-bbl V-8	[L55]A	Fed.	Automatic	Col./Floor*	2.29 NA
Avail. 4.9 Liter (301 CID) 4-bbl V-8	[L37]A	Fed.	Automatic	Col./Floor*	2.14 2.41
Avail. 5.0 Liter (305 CID) 4-bbl V-8	[LG4]C	Cal.	Automatic	Col./Floor*	2.29 2.73
Grand Am					
Base 4.9 Liter E/C† (301 CID) 4-bbl V-8	[L37 & W72]A	Fed.	Automatic	Col./Floor*	2.93 NA
Base 5.0 Liter (305 CID) 4-bbl V-8	[LG4]C	Cal.	Automatic	Col./Floor*	2.73 2.29

Pontiacs are equipped with GM-built engines produced by the following Divisions: A—Pontiac, B—Buick, C—Chevrolet.
††Computer-controlled catalytic converter.

†Electronically controlled spark
*Floor shift available on Grand LeMans/Grand Am w/bucket seats only.

In Addition to or Replacing LeMans Interior Features, Grand LeMans Includes:

- New Cloth and Vinyl or All-vinyl Seats with Front Center Armrest
- New Door Panels with Pull Straps
- Luxury Cushion Steering Wheel
- Carpeted Lower Door Panels
- Dome Lamp Switches on All Doors
- Added Acoustical Insulation
- Dual Horns

In Addition to or Replacing LeMans Interior Features, Grand Am Includes:

- Simulated Brushed-aluminum Instrument Panel Trim Plate
- Rally Gages with Clock
- Custom-stitched Appearance on Instrument Panel Pad
- Bucket Seats
- Console
- Custom Sport Steering Wheel
- Door Panel Pull Straps
- Carpeted Lower Door Panels
- Dual Horns

Standard Tires

- LeMans/Grand LeMans 185/75R14 Black Fiberglass Belt*
- Grand Am 205/70R14 Black Steel Belt*
- Compact Spare

Available Tires

- 185/75R14 White Fiberglass Belt*
- 195/75R14 White Fiberglass Belt*
- 195/75R14 White Steel Belt*

- 205/70R14 Black Steel Belt†† (Std. Grand Am)
- 205/70R14 White Letter Steel Belt††
- 205/70R14 White Steel Belt††
- 205/75R14 White Steel Belt*

- Radials with radial tuned suspension. †Includes Rally Handling Package with larger front stabilizer bar, rear stabilizer bar and specifically tuned suspension.

Standard Steering

- LeMans/Grand LeMans—Manual, Ball-race Gear
- Grand Am—Power

Standard Brakes

- Power, Front Disc, Rear Drum

Fuel Tank Capacity

- 69 liters (18.1 gals.)

MAJOR OPTIONS

- Air Conditioning, Custom or Climate Control (A/C Req. Power Steering; Req. w/305 CID V-8)
- Bumper Guards, Front (NA Grand Am)
- Bumper Guards, Rear (NA Grand Am)
- Clock, Digital Quartz (w/Lamp Grp. & Air Cond. only; NA w/ETR Radio)
- Clock, Electric Quartz (Std. Grand Am; NA w/Rally Gages & IP Tach or ETR Radio)
- Console (Std. Grand Am; w/Bucket Seats only)
- Cruise Control (w/Auto. Trans. only)

- Deck Lid Release, Remote Control
- Defroster, Electric Rear Window
- Gages, Rally & IP Tach (NA w/Elec. Clock)
- Glass, All Windows Soft Ray
- Horns, Dual (Std. Grand LeMans & Grand Am)
- Insulation, Additional Acoustical (Std. Grand LeMans)
- Lamp Group (Std. Grand Am)
- Lamp, Dome Reading
- Mirrors, Illuminated Visor RH
- Mirrors, Sport, LH Remote, RH Man. Convex (Std. Grand Am; Req. w/Specific Two-tones)
- Mirrors, Sport, LH & RH Remote, RH Convex
- Mirror, Visor Vanity RH
- Power Antenna, Automatic
- Power Antenna, Automatic, AM/FM/CB Tri-band (Inc. w/CB)
- Power Door Locks
- Power Seat, Driver, 6-way
- Power Steering (Std. Grand Am; Req. w/V-8 or Air Cond.)
- Power Front Windows (Inc. Power Rear Vent on Sedans)
- Power Windows, Front Doors, Sedan
- Radio, AM/FM
- Radio, AM/FM Stereo
- Radio, AM & Stereo 8-Track Tape Player
- Radio, AM/FM Stereo & Stereo 8-Track Tape Player
- Radio, AM/FM Stereo & Stereo Cassette Tape Player
- Radio, AM/FM ETR Stereo w/Seek & Scan (NA w/Elec. or Digital Clock)
- Radio, AM/FM Stereo w/40-Channel CB (Inc. Tri-band Antenna)

DIMENSIONS

	Coupe Mm. (in.)	Sedan Mm. (in.)
Overall length	5041 (198.6)	5041 (198.6)
Overall width	1827 (71.9)	1827 (71.9)
Wheelbase	2745 (108.1)	2745 (108.1)
Tread, front/rear	1486/1467 (58.5/57.8)	1486/1467 (58.5/57.8)
Head room, front/rear	962/961 (37.9/37.8)	985/957 (38.7/37.7)
Leg room, front/rear	1086/892 (42.8/35.1)	1086/965 (42.6/38.0)
Shoulder room, front/rear	1442/1411 (56.8/55.6)	1451/1450 (57.1/57.1)
Hip room	1314/1384 (51.7/54.5)	1326/1412 (52.2/55.6)
Trunk capacity	469 liters (16.6 cu. ft.)	

Published dimensions are for a base automobile without optional equipment or accessories. Additional accessories or equipment ordered at the customer's option can result in a minor change in these dimensions.

- Radio Speakers, Dual Rear Extended Range (Inc. w/ETR Radio)
- Radio Speaker, Rear (Monaural Radios only)
- Seat, Reclining Passenger (w/Buckets, Notchback, 60/40 only)
- Loose-pillow Design Notchback Seats in New Cloth (Grand LeMans)
- Cloth or Vinyl Bucket Seats (Grand LeMans)
- Steering Wheel, Tilt (w/Auto. Trans. only; NA Deluxe Cushion Wheel)
- Sunroof, Power Glass (Coupe only)
- Trailer Group, Medium (NA w/V-6)
- Windshield Wipers, Controlled Cycle

STEERING WHEELS: Luxury Cushion (Std. Grand LeMans), Custom Sport (Std. Grand Am)

WHEEL COVERS: Deluxe, Custom Fitted, Wire

WHEELS: Rally IV (Std. Grand Am), Cast Aluminum

See salesperson for additional listings and restrictions.

**MORE
PONTIAC
EXCITEMENT
TO THE
GALLON**